

6-Port Expandable Modular SCI Switch for System Area Networks



Features and Benefits

- 4 x 800 MBytes/s duplex user ports,
2 x 800 MBytes/s duplex expansion ports
- ANSI/IEEE 1596-1992 Scalable Coherent Interface (SCI) standard compliant
- Internal Switch bandwidth: 1.28 GBytes
- Port to port latency of 250 nanoseconds
- Dual fans for reliability and increased circuitry lifespan
- High availability clusters supported by hot-pluggable links and port fencing
- Front LEDs for error and activity indication
- Compatible with 19" racks for ease of mounting
- Autoranging power supply

Dolphin's Modular SCI Switch (MS-6E) is a high performance and affordable solution for small server clusters and system area networks.

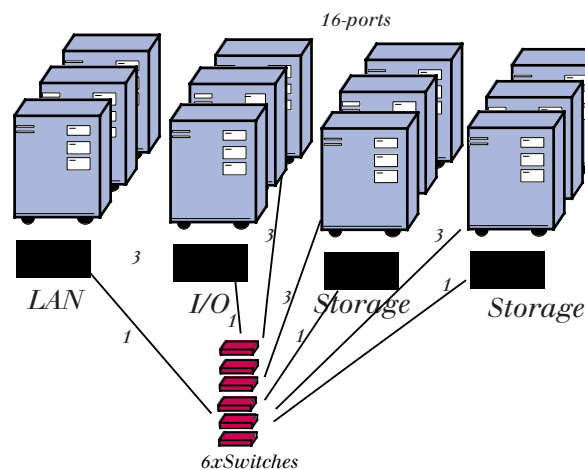
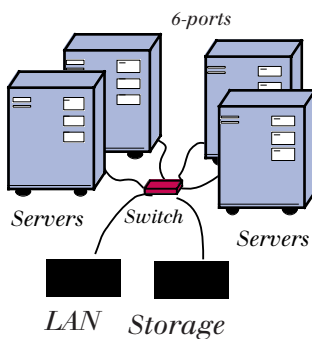
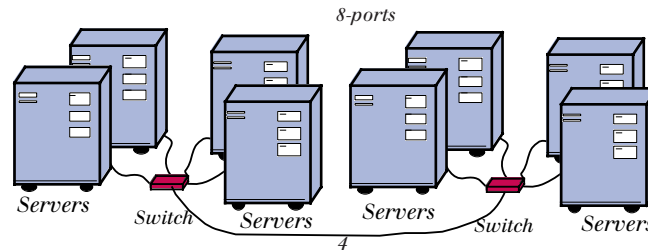
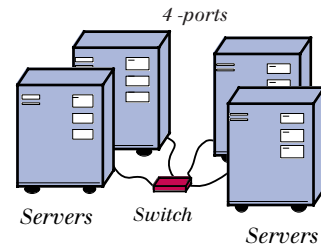
Dolphin's Modular SCI Switch is ideally suited for enterprise clusters that require both high availability and scalability of application performance. The switch is based on a reliable design that provides both guaranteed data delivery and high-bandwidth, ultra-low latency packet switching.

To maximize application scalability, the SCI Switch provides very high data throughput and low message latency.

Cluster nodes connect through four duplex 400 MBytes/s ports. For scalability to even larger clusters, the MS-6E supports redundant high performance expansion ports. These ports allow up to 12 switches to be cascaded, for System Area Networks (SAN) of up to 32 ports. The MS-6E can also be configured as a standalone 6-port switch. The SCI architecture is designed to grow to as many as 64k nodes, which leaves plenty of headroom for future expansion.

For high availability requirements, the SCI Switch's "port fencing" feature guarantees that a node failure will not prevent the cluster from functioning. Hot-pluggable ports allow the addition or removal of nodes without halting cluster applications. The dual expansion ports provide highly reliable redundant links. Dual fans increase MTBF and circuitry life span.

The switch is built around open standards and supports the IEEE/ANSI Scalable Coherent Interface (SCI) standard and adapter cards for standard buses such as PCI and SBus.



Technical Specifications

Link Speeds

400 MBytes/s (800 MBytes/s duplex)

Link Standard

ANSI/IEEE 1596-1992 Scalable Coherent Interface (SCI)

Switch Specification

19" rack mountable
 Autoranging 100W Power Supply

4 user ports,
 2 expansion ports

Power Consumption

40W

Cable Connection

Parallel STP Copper Cable (1-5m)
 Parallel Optical Link PAROLI-SCI (1-150m)

Operating Environment

Operating Temperature: 4°C–32°C
 Relative Humidity: 5%–95% non-condensing
 Altitude: 0 – 3000 meters

Performance

1.28 GBytes/s internal switch bandwidth
 250 nanosecond latency port-to-port

Topologies

1-32 ports

Product Code

MS-6E

Product no.

D515

Dolphin Interconnect Solutions Offices:

Dolphin Headquarters USA:
 3609 East Thousand Oaks Blvd, Suite 209
 Westlake Village, CA 91362-3624

Phone:
 (805) 371-9493
Fax:
 (805) 371-9785

Dolphin USA:
 111 Speen Street
 Framingham, MA 01701-2090

Phone:
 (508) 875-3030
Fax:
 (508) 875-1517

Dolphin Europe:
 Olaf Helsetts vei 6
 0621 Oslo, Norway

Phone:
 + 47 23 16 70 00
Fax:
 + 47 23 16 71 80

Internet Information:
 E-mail: info@dolphinics.com
 World Wide Web: <http://www.dolphinics.com>

© 1998 by Dolphin Interconnect Solutions, Inc. All rights reserved.
 Specifications subject to change without notice. *LinkController* is a trademark of Dolphin Interconnect Solutions. All other brand or product names are trademarks or registered trademarks of their respective holders.