

4-Port Modular SCI Switch for System Area Networks



The Modular SCI Switch is a low cost solution for high availability and performance clustering applications.

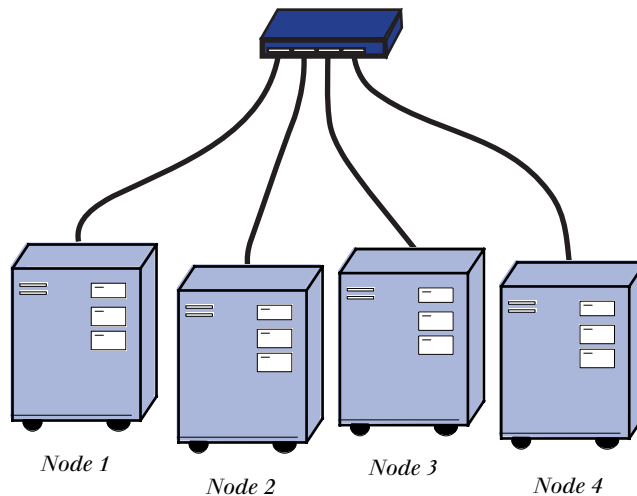
Features and Benefits

- Supports 200 MBytes/sec links for high bandwidth operation
- Ultra-low port-to-port packet routing latency of 600 ns
- Non-blocking cut-through routing supports scalable cluster applications
- Scalable switch bandwidth supports clusters with up to 4 nodes
- Available in 19" rack-mount or desktop unit for easy installation
- Port fencing allows faulty nodes to be isolated from the rest of the cluster
- Auto-initialization for ease of configuration
- Dual fans for increased MTBF and circuitry life span
- Ease of use through switch identification and port LEDs
- High availability clusters supported by hot-pluggable ports and port fencing
- Based on industry standard IEEE/ANSI Scalable Coherent Interface (SCI)

Dolphin's Modular SCI Switch is ideally suited for small to large enterprise clusters that require both high availability and scalability of application performance. The switch is based on a reliable design that provides both guaranteed data delivery and high-bandwidth, ultra-low latency packet switching.

Nodes in a cluster are connected through four hot-pluggable 1.6 Gbit/sec ports. The Modular SCI Switch design guarantees that a node failure will not prevent the cluster from functioning. Nodes can be added or removed without halting cluster applications.

The switch utilizes Dolphin's unique LinkController™ router chips for high throughput and very low latency switching of SCI packets. Since no software or firmware is required for data delivery, port-to-port packet routing latencies for the switch are 480 ns for read and 600 ns for write transactions.



Minimum Configuration - 1 to 4 Node Cluster

The switch is built around open standards and supports the IEEE/ANSI Scalable Coherent Interface (SCI) standard and adapter cards for standard buses such as SBus and PCI. Dolphin provides an Interconnect Resource Manager (IRM) for Windows NT and UNIX that performs initialization, configuration and error reporting.

Technical Specifications

Physical Dimensions

Width 445 mm
Height 44 mm
Depth 150 mm
Weight 2.26 kg

Power Consumption

35 W

Port Link Architecture

User port: Dolphin 200 MBytes/sec SCI
LinkController™

Operating Environment

Operating Temperature: 4°C–32°C
Relative Humidity: 5%–95% non-condensing
Altitude: 0 – 3000 meters

Regulatory Standards

FCC Class A

Product Code

SW4

Product no.

D505

Cable Connection

Parallel Shielded Twisted Pair

Dolphin Interconnect Solutions Offices:

Dolphin Headquarters USA:

3609 East Thousand Oaks Blvd, Suite 209
Westlake Village, CA 91362-3624

Phone:

(805) 371-9493

Fax:

(805) 371-9785

Dolphin USA:

111 Speen Street
Framingham, MA 01701-2090

Phone:

(508) 875-3030

Fax:

(508) 875-1517

Dolphin Europe:

Olaf Helsetts vei 6
0621 Oslo, Norway

Phone:

+ 47 23 16 70 00

Fax:

+ 47 23 16 71 80

Internet Information:

E-mail: info@dolphinics.com

World Wide Web: <http://www.dolphinics.com>

© 1998 by Dolphin Interconnect Solutions, Inc. All rights reserved.
Specifications subject to change without notice. *LinkController* is a trademark of Dolphin Interconnect Solutions. All other brand or product names are trademarks or registered trademarks of their respective holders.